



MAINTENANCE

July Tasks

Maintenance – Year-Round Care of Landscape Gardens

3 MAIN CATEGORIES OF CARE:

- **PLANT CARE**
- **GENERAL GARDEN CARE**
- **PRESENTATION**



July - Maintenance

PERENNIAL PLANT CARE

Every plant, every visit

Splitting Iris:

Dig up, separate tubers, replant at the surface
Cut back foliage to 4" to keep it from flopping over

Perennials/Grasses

Plant/Replant

Deadhead

Fertilize

Deadleaf/Finger-Comb/Scrunch

Aerate

Prune dead

Lift/Uncover (tubers)

Stake/Support

Cut back (for new flush)

Split/Transplant



Lifting and splitting Bearded Iris



July - Maintenance

PERENNIAL PLANT CARE

Every plant, every visit



Plant/Replant

Deadhead

Fertilize

Deadleaf/Finger-Comb/Scrunch

Aerate

Prune dead

Lift/Uncover (tubers)

Stake/Support

Cut back (for new flush)

Split/Transplant

Dig up
Split apart with
shovel
Replant with
compost, fertilizer,
water



July - Maintenance

PERENNIAL PLANT CARE

Every plant, every visit



Sunburned/spent:
Astilbe
Bleeding hearts
Columbine
Spiderwort/Dayflower
Etc..

End of July, stop
cutting back for a
second flush of growth



Perennials/Grasses

Plant/Replant

Deadhead

Fertilize

Deadleaf/Finger-Comb/Scrunch

Aerate

Prune dead

Lift/Uncover (tubers)

Stake/Support

Cut back

Split/Transplant



July - Maintenance

PERENNIAL PLANT CARE

Every plant, every visit



Spend 30 sec – 1 min per plant ideally

Perennials/Grasses

Plant/Replant

Deadhead

Fertilize

Deadleaf/Finger-Comb/Scrunch

Aerate

Prune dead

Lift/Uncover (tubers)

Stake/Support

Cut back (for new flush)

Split/Transplant



July - Maintenance

PERENNIAL PLANT CARE

Every plant, every visit



Ideal 30 sec – 1 min per plant
Try different techniques to see what is most effective
Hand pulling
Cutting with pruner
Pony-tail several stems and cut all at once
Shearing



Perennials/Grasses

Plant

Deadhead

Fertilize

Deadleaf/Finger-Comb/Scrunch

Aerate

Prune dead

Replant

Lift/Uncover (tubers)

Stake/Support

Cut back (for new flush)

Split/Transplant



July - Maintenance

VINE PLANT CARE

Every plant, every visit



Vines

Plant

Prune dead

Train

Deadhead

Fertilize

Deadleaf



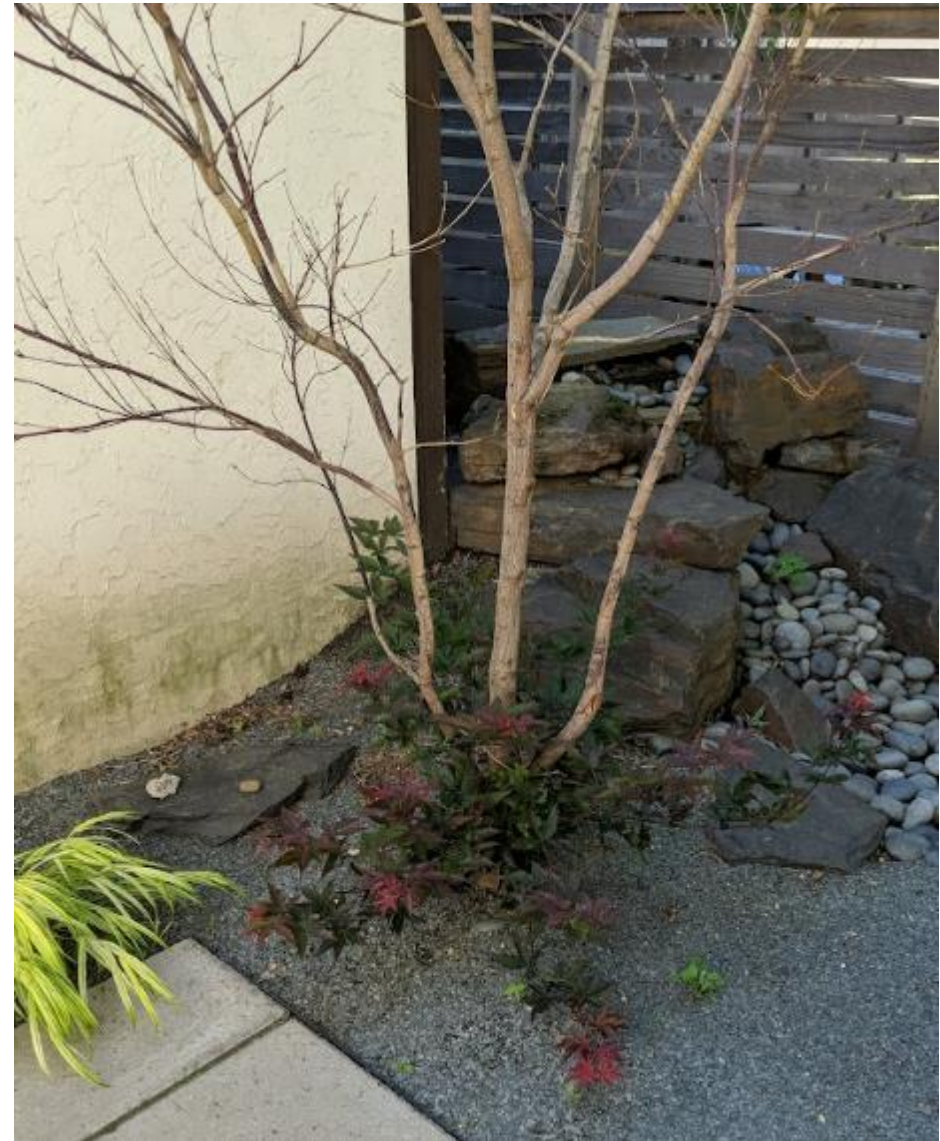
July - Maintenance

SHRUB/TREE PLANT CARE

Every plant, every visit



Drop it or chop it
if it's dead



- Prune dead
- Prune
- Fertilize
- Plant
- Limb up

July - Maintenance

SHRUB/TREE PLANT CARE

Every plant, every visit



Prune off suckers
from tree trunks
and bases

Ornamental Trees

Prune dead

Prune

Fertilize

Plant

Limb up



July - Maintenance

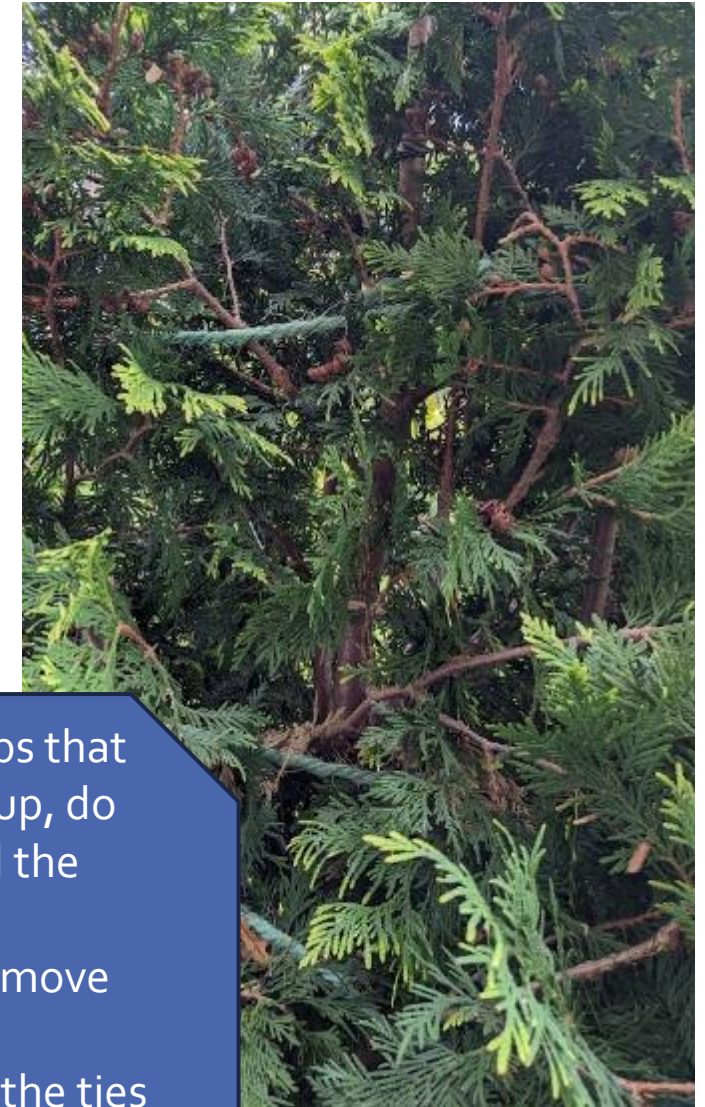
SHRUB/TREE PLANT CARE

Every plant, every visit

Shrubs/Evergreens

Prune / Shear
Deadleaf/needle
Plant
Aerate
Deadhead
Fertilize

Shearing
Spirea



Assess any shrubs that have been tied up, do they still need the support?
If they don't, remove

If they do, adjust the ties so that they don't stay in exactly the same spot, which can over time cause damage.

July - Maintenance

ANNUALS, ETC. PLANT CARE

Every plant, every visit



Pinching back plants that are overtaking their neighbors so that balance and design can be maintained.

Annuals/Veggies/Herbs/Bulbs

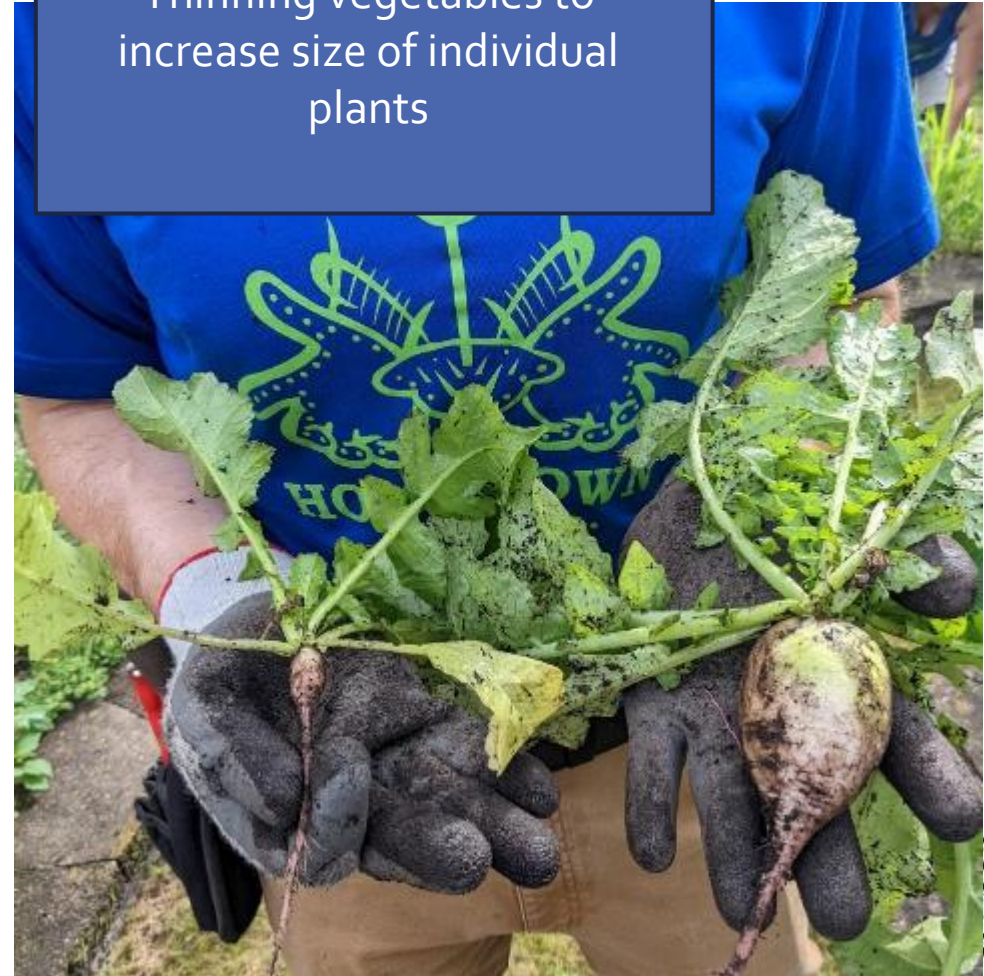
Deadhead/Deadleaf

Fertilize

Harvest

Pinch

Thinning vegetables to increase size of individual plants



Containers

Deadhead spent blooms

Deadleaf damaged
leaves

Fertilize with soluble
fertilizer, water in

Pinch “Thriller” plants

Pinch “Filler” plants

Pinch “Spiller” plants

Rotate container if
possible/makes sense

Clean off the exterior of
the container,
sweep/blow debris away.



Type	Form	Use	Tips
All Purpose Granular (Perennial, Shrub, & Tree; Flower & Vegetable; Osmocote Indoor& Outdoor, etc)	Sprinkles Slow release	In the planting hole of new or transplanted perennials	Mix into compost in planting hole
All Purpose Soluble (Bloom Enhancer, Annual Boost, Bloom Boost, Etc)	Blue Powder Fast Acting	Containers and in-ground annuals, perennials that need a boost NOW	Water into soil
Acidic Granular (Acid-Loving, Evergreen, Camella, Rhododendron & Evergreen, Etc)	Sprinkles Slow Release	Around the base of established plants or in the planting hole of new Azaleas & Rhododendrons Hydrangea mac. Evergreens	Mix into compost in planting hole
Acidic Soluble	Blue Powder Fast Acting	Certain annuals in containers or in- ground, perennials or shrubs that need a boost NOW	Water into soil
Rose Granular	Sprinkles Slow release	Around the base of established plants or in the planting hole of new roses	Mix into compost in planting hole

July – Maintenance

GENERAL GARDEN CARE

Every element, every visit

Weed Weed Weed
Weed Weed Weed
Weed Weed Weed
Weed Weed Weed
Weed Weed Weed
Weed Weed Weed
Weed Weed Weed
Weed Weed Weed
Weed Weed Weed
Weed Weed Weed
Weed Weed Weed
Weed Weed Weed
Weed Weed Weed
Weed Weed Weed
Weed Weed Weed
Weed Weed Weed
Weed Weed Weed
Weed Weed Weed
Weed Weed Weed
Weed Weed Weed
Weed Weed Weed
Weed Weed Weed





July – Maintenance

GENERAL GARDEN CARE

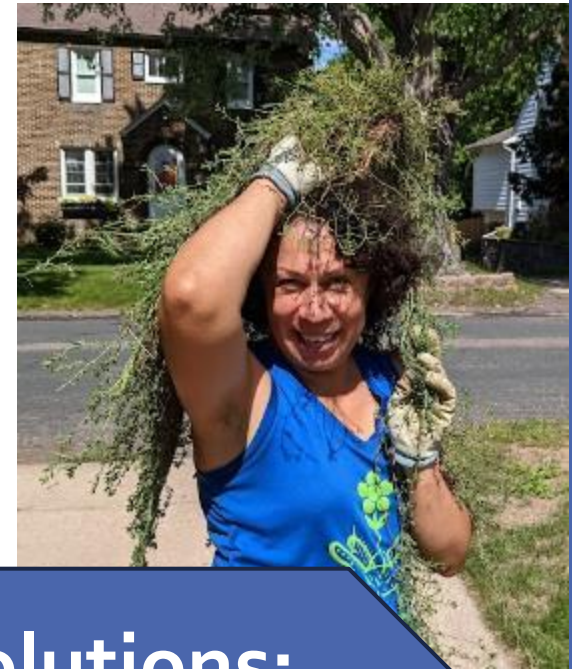
Every element, every visit

Challenges with midsummer weeding:

- ID
- Size
- Location
- Quantity

Potential Solutions:

- Process of elimination
 - Know what does/doesn't belong
- Thoroughness
 - Check in, under, around every plant
- Right tool for the job
 - Start with bigger tools first





- Approach to weeding
in this garden:
- Identify what belongs
 - Remove everything else
 - Keep spacing tidy and consistent



Approach to weeding in this garden:

- Identify what belongs
- Remove everything else
- Watch for what's creeping in from the edges
 - **BIG SHOVELS**



Approach to weeding in this garden:

- Look in, under, alongside every plant
- Identify what belongs
- Remove everything else



Approach to weeding
in this garden:

- Remove what you know doesn't belong
 - Dandelion
 - Thistle
 - Bellflower
- Tree seedlings
- Others...

What is similar
about these?
What is different?



July – Maintenance

GENERAL GARDEN CARE

Every element, every visit



Pest/Disease
Monitor
Treat



July – Maintenance

GENERAL GARDEN CARE

Every element, every visit

Soil

Amend

Fill holes

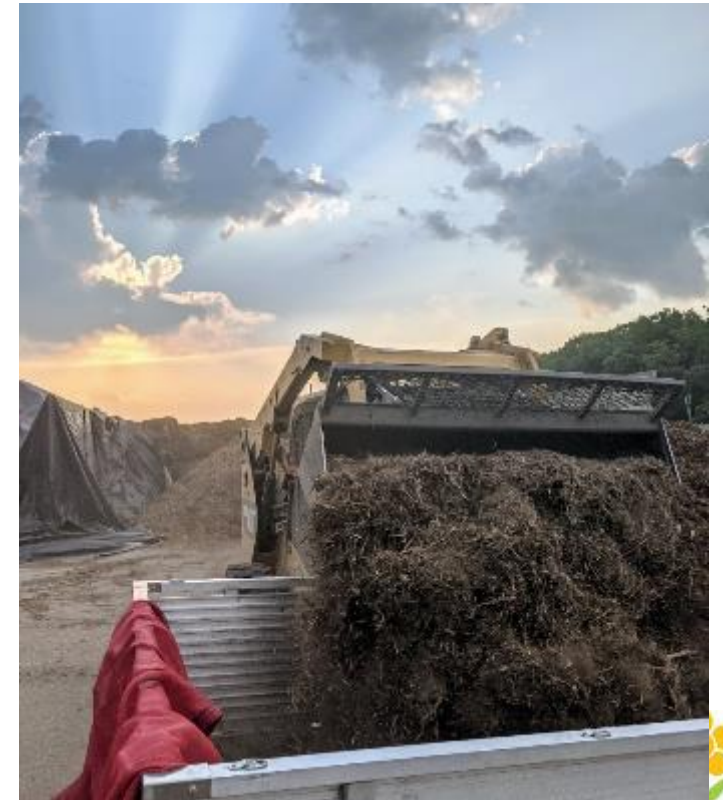
Redistribute

Hardscape

Uncover edges



Mulch
Redistribute
Add



July – Maintenance

GENERAL GARDEN CARE

Every element, every visit

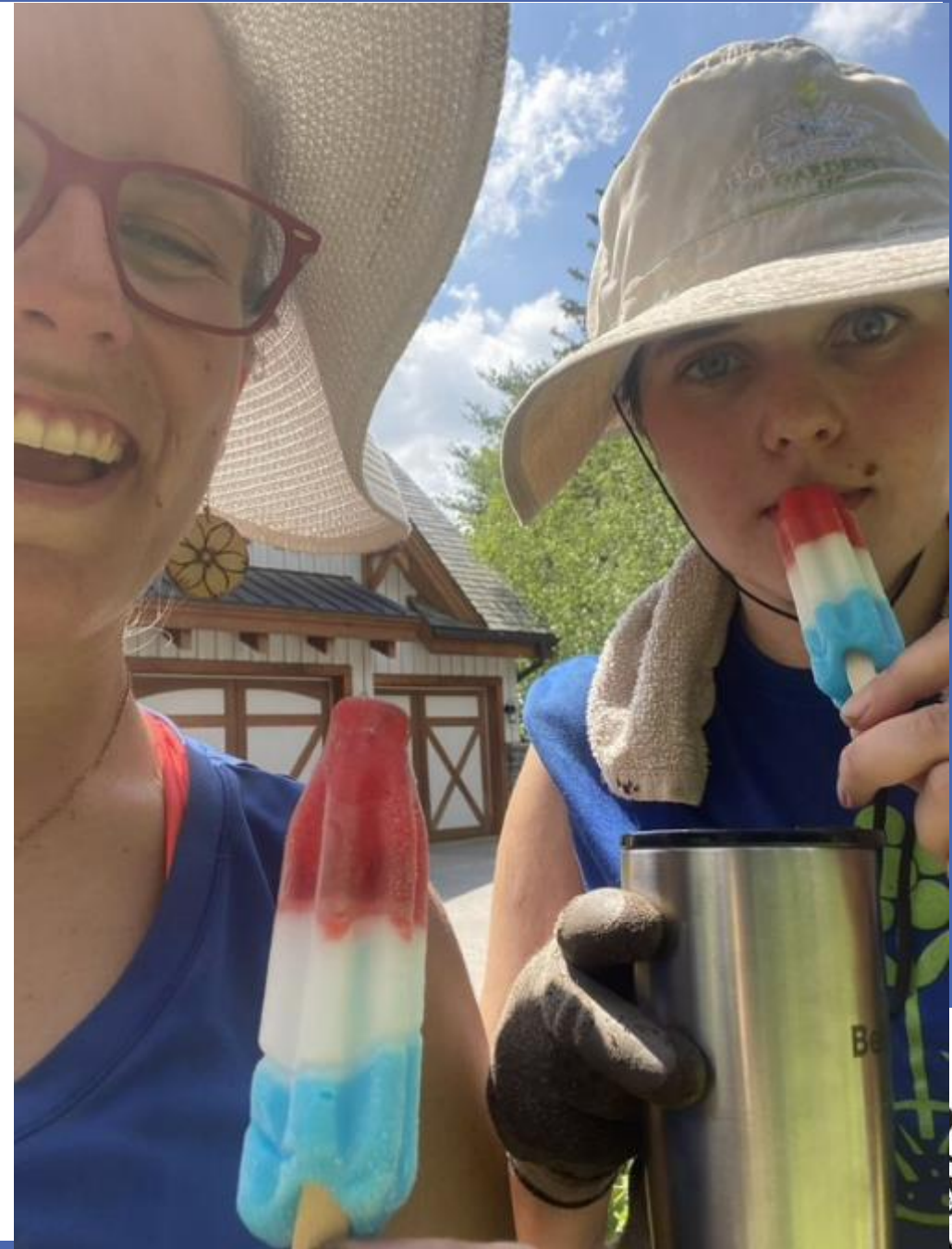
Edges

Rake

Other

Remove debris

Pick up sticks, etc.



July – Maintenance

PRESENTATION

Every element, every visit

General Aesthetics

Site is neat, clean and something you're proud of

Tools removed

Debris bags stacked neatly

Trash picked up



July – Maintenance

GENERAL GARDEN CARE

Every element, every visit

<i>Soil</i>	<i>Hardscape</i>	<i>Edges</i>	
Amend	Uncover edges	Rake	<i>Other</i>
Fill holes	<i>Mulch</i>		
Redistribute	Redistribute	Remove debris	
	Add	Pick up sticks, etc.	

PRESENTATION

Every element, every visit

General Aesthetics

- Site is neat, clean and something you're proud of
- Tools removed
- Debris bags stacked neatly
- Trash picked up

Ornamental Trees

- Plant
- Prune dead
- Prune
- Fertilize
- Limb up

Shrubs/Evergreens

- Plant
- Prune/Shear
- Deadleaf/needle
- Aerate
- Deadhead
- Fertilize

Vines

- Plant
- Prune dead
- Train
- Deadhead
- Fertilize
- Deadleaf

Perennials/Grasses

- Plant
- Deadhead
- Fertilize
- Deadleaf/Finger-Comb/Scrunch
- Aerate
- Prune dead
- Replant
- Lift/Uncover (tubers)
- Stake/Support
- Cut back (for new flush)
- Split/Transplant

Annuals/Veggies/Herbs/Bulbs

- Deadhead/Deadleaf
- Fertilize
- Harvest
- Pinch

PLANT CARE

